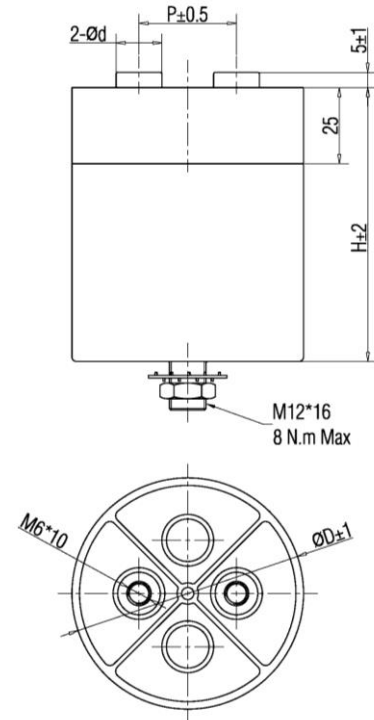


GENERAL TECHNICAL CHARACTERISTICS	
Reference standards :	IEC 61071-60068
Climatic category:	40/85/56
Dielectric :	Polypropylene film
Construction :	Extended metallized film , Dry construction
Features:	Low ESR,Low Ls, high current, improved reliability
Case :	Aluminum case
ELECTRICAL CHARACTERISTICS	
Working temperature :	-40 to + 85°C(max hotspots≤70°C)
Storage temperature :	-40 to + 85°C
Capacitance :	33 to 3200μF
Rated Voltage	700 to4000 Vdc
Tolerance :	± 5%(J) ± 10%(K)
Failure rate:	50FIT
Dissipation factor	≤ 2×10 ⁻³ Measured at 100Hz 25°C
Life expectancy :	100,000 hours at Un and 70°C
TEST METHODS AND PERFORMANCES	
Test voltage between terminals	1.5Un (10s at 20± 5°C)
Test voltage terminal and case :	3000Vac,(60s 50Hz 20± 5°C)
Insulation resistance (C*Ri) :	≥ 10000 s after 1 minute of electrification at 100Vdc (25±5°C)

Outline drawing



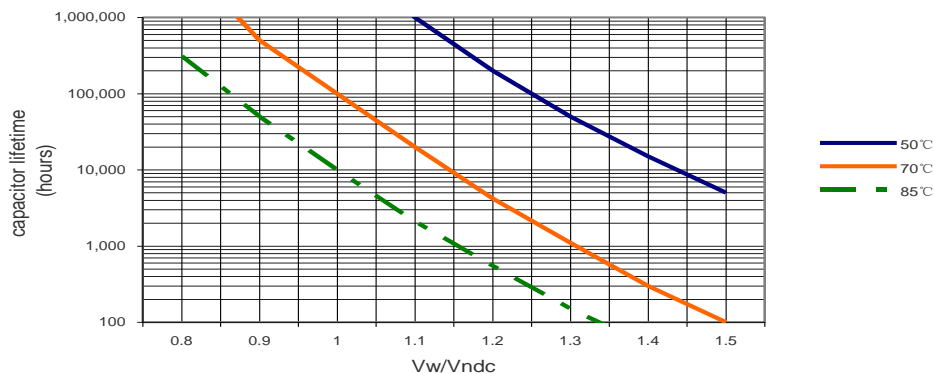
Stud mounting

D (mm)	Output						Stud mounting	
	F	Torque	M	Torque	P (mm)	T(mm)	S	Torque
76	M6×10	4.5 N.M Max	M8×20	8.5 N.M Max	32	15	M12×16	8 N.M Max
86	M6×10	4.5 N.M Max	M8×20	8.5 N.M Max	32	15	M12×16	8 N.M Max
116	M6×10	4.5 N.M Max	M8×20	8.5 N.M Max	50	15	M12×16	8 N.M Max
136	M6×10	4.5 N.M Max	M8×20	8.5 N.M Max	50	16	M12×16	8 N.M Max

PROTECTION AGAINST OVERVOLTAGES

1.1 × Un	30% of the service period
1.15 × Un	30 min/d
1.2 × Un	5 min/d
1.3 × Un	1 min/d
1.5 × Un	100 ms no more than 1000 times

EXPECTED LIFE



Electrical specifications, ordering codes

Part Number	Cap (μ F)	D (mm)	H (mm)	Ipeak (KA)	Irms@25°C @10kHz	ESR@ 1.0kHz	Ls (nH)	Rth (k/W)	Wn (Ws)
		Un 900V.DC		Us 1350V		Ur 200V			
CLD900K370-*	370	76	125	3.3	59	1.2	40	3.7	150
CLD900K390-*	390	76	120	1.6	33	3.7	60	3.9	158
CLD900K450-*	450	76	145	3.2	62	1.4	45	3.2	182
CLD900K490-*	490	86	125	4.4	71	0.9	40	3.3	198
CLD900K520-*	520	86	120	2.1	39	2.8	60	3.5	211
CLD900K570-*	570	76	175	3.4	61	1.6	50	2.7	231
CLD900K600-*	600	86	145	4.2	71	1.1	45	2.9	243
CLD900K750-*	750	86	175	4.5	73	1.3	50	2.4	304
CLD900K780-*	780	76	225	3.1	63	2.0	60	2.0	316
CLD900K1000-*	1000	116	125	4.0	54	1.5	60	2.9	405
CLD900K1050-*	1050	86	225	4.2	76	1.5	60	1.8	425
CLD900K1100-*	1100	116	150	7.7	89	0.7	45	2.5	446
CLD900K1450-*	1450	116	180	8.7	90	0.7	50	2.1	587
CLD900K2000-*	2000	116	230	8.0	92	0.9	60	1.7	810
CLD900K2750-*	2750	136	230	11.0	100	0.8	60	1.5	1114
		Un 1100V.DC		Us 1650V		Ur 250V			
CLD1100K250-*	250	76	120	1.5	32	4.6	60	3.9	151
CLD1100K330-*	330	86	120	2.0	36	3.6	60	3.5	200
CLD1100K370-*	370	86	130	1.9	36	3.8	60	3.2	224
CLD1100K400-*	400	86	145	4.0	67	1.2	45	2.9	242
CLD1100K420-*	420	86	155	4.2	69	1.3	45	2.7	254
CLD1100K500-*	500	86	175	4.0	67	1.5	50	2.4	303
CLD1100K650-*	650	116	125	3.9	49	1.9	60	2.9	393
CLD1100K680-*	680	86	225	4.1	69	1.8	60	1.8	411
CLD1100K730-*	730	116	150	7.3	82	0.8	45	2.5	442
CLD1100K900-*	900	136	125	5.4	54	1.4	60	2.5	545
CLD1100K920-*	920	116	180	7.4	82	0.9	50	2.1	557
Part Number	Cap (μ F)	D (mm)	H (mm)	Ipeak (KA)	Irms max. (A)	ESR (m Ω)	Ls (nH)	Rth (k/W)	Wn (Ws)
		Un 1100V.DC		Us 1650V		Ur 250V			
CLD1100K1250-*	1250	116	230	7.5	84	1.1	60	1.7	756
CLD1100K1700-*	1700	136	230	10.2	90	0.9	60	1.5	1029
CLD1100K1900-*	1900	136	260	15.2	120	0.5	50	1.3	1150
CLD1100K2550-*	2550	136	335	15.3	120	0.6	60	1.0	1543
		Un 1300V.DC		Us 1950V		Ur 250V			
CLD1300K170-*	170	76	120	1.4	27	5.6	60	3.9	144
CLD1300K230-*	230	86	120	1.8	33	4.2	60	3.5	194
CLD1300K330-*	330	86	175	3.3	61	1.8	50	2.4	279
CLD1300K450-*	450	116	125	3.6	45	2.3	60	2.9	380
CLD1300K470-*	470	86	225	3.8	64	2.2	60	1.8	397
CLD1300K500-*	500	116	150	6.5	76	0.9	45	2.5	423
CLD1300K630-*	630	136	125	5.0	50	1.7	60	2.5	532
CLD1300K640-*	640	116	180	6.4	77	1.0	50	2.1	541
CLD1300K850-*	850	116	230	6.8	77	1.3	60	1.7	718
CLD1300K900-*	900	136	180	9.0	84	0.8	50	1.9	761
CLD1300K1200-*	1200	136	230	9.6	84	1.0	60	1.5	1014
CLD1300K1350-*	1350	136	260	13.5	114	0.6	50	1.3	1141
CLD1300K1800-*	1800	136	335	14.4	119	0.7	60	1.0	1521

	Un 1900V.DC			Us 2850V		Ur 400V			
CLD1900K100-*	100	86	120	1.4	27	6.3	60	3.5	181
CLD1900K150-*	150	86	175	2.9	51	2.6	50	2.4	271
CLD1900K190-*	190	116	125	2.7	36	3.4	60	2.9	343
CLD1900K200-*	200	86	225	2.8	52	3.3	60	1.8	361
CLD1900K220-*	220	116	150	5.5	65	1.2	45	2.5	397
CLD1900K275-*	275	136	125	3.9	41	2.4	60	2.5	496
CLD1900K280-*	280	116	180	5.3	64	1.5	50	2.1	505
CLD1900K380-*	380	116	230	5.3	65	1.8	60	1.7	686
CLD1900K400-*	400	136	180	7.6	71	1.1	50	1.9	722
CLD1900K540-*	540	136	230	7.6	72	1.3	60	1.5	975
CLD1900K600-*	600	136	260	11.4	99	0.8	50	1.3	1083
CLD1900K800-*	800	136	335	11.2	102	1.0	60	1.0	1444
	Un 2500V.DC			Us 3750V		Ur 600V			
CLD2500K95-*	95	116	130	1.5	43	2.5	40	2.8	297
CLD2500K130-*	130	136	130	2.1	47	1.9	40	2.4	406
CLD2500K200-*	200	116	230	1.6	42	4.4	60	1.7	625
CLD2500K280-*	280	136	230	2.2	46	3.2	60	1.5	875
	Un 3600V.DC			Us 5400V		Ur 800V			
CLD3600K42-*	42	116	130	1.3	35	3.7	40	2.8	272
CLD3600K60-*	60	136	130	1.8	40	2.7	40	2.4	389
CLD3600K88-*	88	116	230	1.2	34	6.6	60	1.7	570
CLD3600K125-*	125	136	230	1.8	38	4.7	60	1.5	810
	Un 4000V.DC			Us 6000V		Ur 900V			
CLD4000K33-*	33	116	130	1.2	33	4.2	40	2.8	264
CLD4000K47-*	47	136	130	1.6	37	3.0	40	2.4	376
CLD4000K70-*	70	116	230	1.2	32	7.4	60	1.7	560
CLD4000K100-*	100	136	230	1.7	36	5.3	60	1.5	800

Part Numbering System :

CLD1100K420 – FS " F " = F for Internal thread, M for lead screw " S " = C for clamp, S for stud mounting